

# AG-Financial Network

## *GREECE*

### **AGFN Hellas**

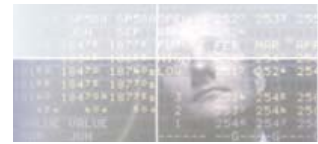
181 Patision  
Athens, 11252  
Tel: +30 210 864 5154  
Fax: +30 210 862 2208  
e-mail: [support@agfn.gr](mailto:support@agfn.gr)  
Web-site: [www.agfn.gr](http://www.agfn.gr)

## *CYPRUS*

### **AG-Financial Network**

12 Themistokles Dervi  
Nicosia, CY-1522  
Tel: +357 22 662 232  
Fax: +357 22 662 230  
e-mail: [agfn@cytanet.com.cy](mailto:agfn@cytanet.com.cy)  
Web-site: [www.agfn.com](http://www.agfn.com)





## The Company

**AG Financial Network** ([www.agfn.com](http://www.agfn.com)) is data vendor for Athens Exchange (Stock and Derivatives) and for Cyprus Stock Exchange. Since 1995, high-level applications and services have been developed for financial markets and established the company in local markets.

**AGFN**, all these years, follows customers daily needs, which are met with responsibility and continuously provides high-level standards following the latest technology.

Financial organisations, other big companies, and private investors chose AGFN for prompt and accurate information and keep Company's good reputation.

AG Financial Network operates in Cyprus since 1995. **AGFN Hellas** has been founded on 1998 ([www.agfn.gr](http://www.agfn.gr)).

Company's first target is to offer first-rate quality service to any subscriber, which is insured by continuous support and accurate flow of complete information.

## The Products

AGFN provides variety of scalable products to support subscribers who are interested to follow, analyse and manage exchange data and information.

### EXCHANGE PRODUCTS

AGFN develops applications to broadcast real-time data of Greece and Cyprus exchanges recently we have added exchange data from Montenegro.

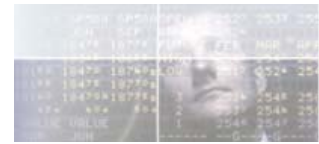
### ***AGFN ExpertTader and AGFN ExpertLite application***

**AGFN ExpertTrader** is a user friendly application and easy to use by the professional user. It displays exchange data as they take place, using streaming technology. The application characteristics are:

- ✓ Stock windows by sector / index
- ✓ Multiple selections ticker.
- ✓ Times & Sales with all trades or / and orders.
- ✓ Intra day and historic graphs.
- ✓ Exchange news.
- ✓ Markets statistics.
- ✓ Fundamental data.
- ✓ Portfolios.
- ✓ Options analysis.
- ✓ Real-time Interface to technical analysis applications.



In addition to the above the **ExpertTrader pro** includes the following extra features:



## ✓ Alarms Windows

SYMBOL	TIME	DESCRIPTION
ETE	15:22:24	Big Order - SELL (LEVEL 0) 5.000 @ 27.84 = 139.200 Euro
PPC	15:22:00	Big Order - SELL (LEVEL 0) 10.000 @ 20.00 = 200.000 Euro
DAIOS	15:21:27	New 52 Week Low - 8.28
MARFB	15:20:59	Big Order - SELL (LEVEL 1) 23.000 @ 4.44 = 102.120 Euro
DAIOS	15:21:03	New 52 Week Low - 8.36
HTO	15:18:48	Big Order - BUY (LEVEL 5) 10.000 @ 14.88 = 148.800 Euro
LAWI	15:16:50	AUCTION STARTED
KORRES	15:16:49	New 52 Week Low - 7.90
LAWI	15:16:47	TRADING HALTED BY VOLATILITY INTERRUPTER
SPAD	15:15:55	Big Order - SELL (LEVEL 0) 5.000 @ 22.50 = 112.500 Euro

The following types of alarms and notifications can appear in this window. The user can specify in the "User Customization" window which of them he wants to appear.

- **OTC Transactions**
- **52 Week High / Low**
- **New Intraday High / Low**
- **Intraday Reversal Up / Down.** A Reversal Up is when a share makes a new intraday high after making a new low.
- **Big Orders.** The user can specify two levels. e.g. Level 1 is when an order is bigger than 100,000 Euros and Level 2 is when an order is bigger than 200,000 Euros. The alarm description also includes the position of the order in the order book. e.g. "Big Order - SELL (LEVEL 4) 15.000 at 28,20 = 423.000 Euros". This means that an order of value 423.000 Euros was placed for the specified share with price 28,20 Euros which corresponds to Sell Level 4 in the Order Book of the share at the time of entry.
- **Volume Change from last 5 sessions average.** The user can specify two levels. eg. Level 1 is when the intraday volume is 3 times the last 5 sessions average and Level 2 when it is 5 times.
- **Volume Change from monthly average.** The user can specify two levels. E.g. Level 1 is when the intraday volume is 3 times the monthly average and Level 2 when it is 5 times.
- **Open with positive / negative gap.** Two levels can be specified. E.g. Level 1 is when a share opens with a 3% gap and Level 2 when it opens with a 6% gap.

In the Alarms window, Level 1 alarms appear with a white background. Level 2 alarms appear with a coloured background.

OTC Transactions and 52 week High / Low all appear as Level 2 alarms.

New Intraday High / Low all appear as Level 1.



## ✓ Orders Windows

SYMBOL	VOLUME	PRICE	TIME	.	L
ETE	510	27.92	15:23:49	A	0
ETE	382	27.84	15:23:41	A	2
ETE	360	27.90	15:23:41	A	0
ETE	300	27.90	15:23:34	Π	1
ETE	1,000	27.92	15:23:16	Π	1
ETE	510	27.84	15:23:00	A	1
ETE	642	27.84	15:22:58	A	1
ETE	1,800	27.84	15:22:55	A	0
ETE	476	27.84	15:22:31	A	0

Buy Orders appear Green and Sell Orders Red.

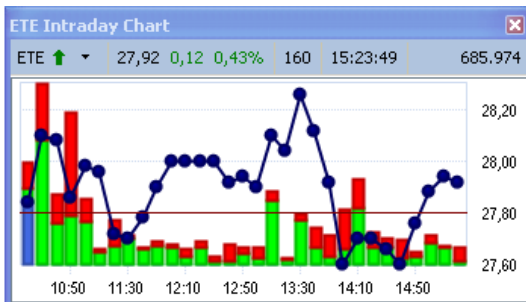
The "Level Column - L" shows the Order Book level at which the order was placed. eg. a Level 1 Buy order means that the order was placed at the same price as the best buy order at the moment. Level 2 would mean that it was placed at the second best price.

Level 0 means that a buy order was placed at the best sell price or higher, or a sell order was placed at the best buy price or lower. **A Level 0 order is either fully or partly matched.**

For example a 100,000 shares buy order could result in 20 different smaller transactions (shown individually in the Transactions window) plus a remainder of 60,000 at the best buy price. In the Orders Window this is going to appear as a single 100,000 shares buy order placed at Level 0.

Level 0 orders are shown with a coloured background. Level 1-5 orders are shown with a white background.

## ✓ Intraday Chart

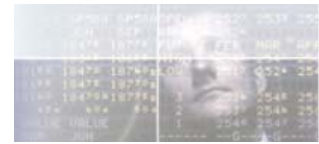


This release includes an improved version of the intraday transactions chart. Volume resulting from Buy Orders appears Green and Sell Orders Red. Volume resulting from auctions, such as the pre-opening and the closing auctions is shown blue.

This presents a much clearer picture of the share momentum. Using the right-click menu the user can select between a Tick-data chart or a 1,5,10 or 15 minute period chart.

The user can also select between a line-chart, an OHLC chart or a candlestick chart.

**Data from the beginning of the trading session are retrieved from the streaming server, so that a complete intraday chart is drawn.**



## ✓ Market Panel



The market panel is shown on the right side of the application. This can be shown or hidden using the button on the top toolbar.

**The selected market can be switched between the "Athens Stock Exchange" and the "Cyprus Stock Exchange" from the menu appearing when the user clicks on the index label on the top right, on top of the market panel.**

The panel can be split in the following sections:

- **Winners-Loosers.** This shows the number of winner shares, the number of losing shares and the number of shares unchanged.

- **General Index chart.**

- **Main Indices values.** This shows the value, change and percentage change of the main market indices as well as the most important European indices (DAX is 20 minutes delayed.)

- **Market Volume Momentum.** This shows the Total Volume, The Positive Volume (resulting from Buy orders), absolute value and percentage of Total volume, and the Negative Volume (resulting from Sell orders).

- **Market Momentum Chart.** This is a 10-minute period chart of the market momentum. Green bars show Positive Volume. Red Bars show Negative Volume. The Green line shows the number of Winning shares and the Red line the number of Losing shares.

- **Alarms.** This table shows Level 2 alarms for the selected market.

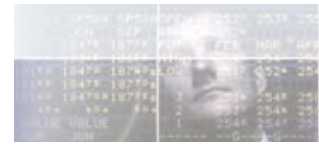
## ✓ Market Momentum Charts



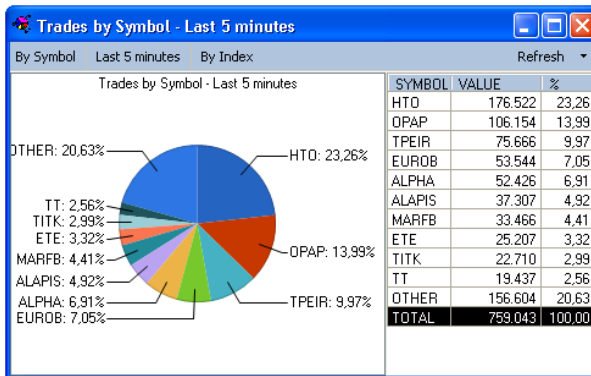
This is a chart of the market momentum for the selected market. Green bars show Positive Volume. Red Bars show Negative Volume. The Green line shows the number of Winning shares and the Red line the number of Losing shares.

Using the right-click menu the user can select between a 1,5,10 or 15 minute period chart.

**The user can also select between a bar-chart or a cumulative volume chart.**



## ✓ Trades Distribution



This window shows the trades distribution by share as a percentage of the total trading volume. The user can also select to see the trades distribution for only the last five minutes as a percentage of the last 5 minutes trading volume.

Alternatively, the user can select to see the trades distribution by FTSE index.

**The selected market can be switched between the "Athens Stock Exchange" and the "Cyprus Stock Exchange" from the menu appearing when the user clicks on the arrow menu on the top right corner.**

## ✓ Last 5 Minutes Analysis

SYMBOL	+/-	%D	VALUE	%
ETE	-0,08	-0,29	736.726	49,05
TPEIR	0,10	0,57	293.121	19,51
MARFB	0,04	0,90	154.042	10,26
EUROB	0,02	0,14	103.520	6,89
HTO	0,02	0,13	91.130	6,07
ALAPIS	0,00	0,00	78.983	5,26
BOC	0,02	0,24	57.810	3,85
MYTIL	-0,04	-0,55	45.274	3,01
ALPHA	0,04	0,22	45.180	3,01
PPC	0,10	0,51	36.594	2,44

SYMBOL	+/-	%D	VALUE	%
XYLEP	0,07	7,22	517	0,03
PSYST	0,03	6,12	1	0,00
SANYD	0,01	1,72	3.245	0,22
INLOT	0,14	1,42	29.776	1,98
EYAPS	0,08	1,31	3.100	0,21
TATT	0,04	1,17	3.460	0,23
TGEN	0,04	1,05	11.540	0,77
MARFB	0,04	0,90	154.042	10,26
EEEK	0,14	0,86	16.497	1,10
EXAE	0,06	0,71	14.460	0,96

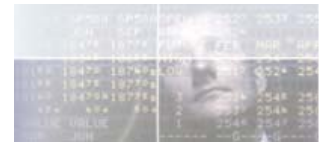
SYMBOL	+/-	%D	VALUE	%
LEBEK	-0,03	-3,23	920	0,06
NEWS	-0,02	-2,11	4.214	0,28
KOUM	-0,02	-1,36	1.160	0,08
AGRI	-0,03	-1,24	717	0,05
AVAX	-0,04	-0,97	18.146	1,21
MYTIL	-0,04	-0,55	45.274	3,01
FORTH	-0,02	-0,48	4.120	0,27
ETE	-0,08	-0,29	736.726	49,05
FRIGO	-0,02	-0,14	8.161	0,54

This window shows a market analysis for the last 5 minutes of trading.

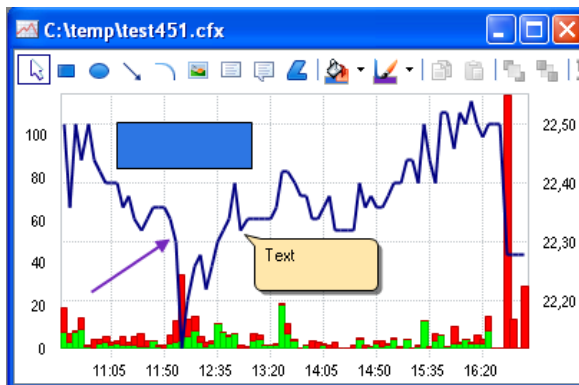
The first table shows the 10 most traded shares, the second table the 10 shares with the biggest percentage increase and the third table the 10 shares with the biggest percentage loss. **All table volume numbers and change numbers apply for the last 5 minutes of trading only.**

The user can select to include all shares for the selected market, or only the Big Cap or Small Cap shares.

**The selected market can be switched between the "Athens Stock Exchange" and the "Cyprus Stock Exchange" from the menu appearing when the user clicks on the arrow menu on the top right corner.**



## ✓ Save / Open Charts



Using the right-click menu intraday charts can be saved to disk. The saved charts can later be opened using the "Open Chart File" menu in the program Tools.

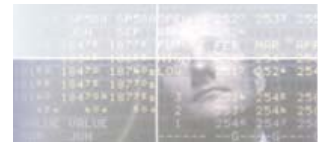
The opened chart can be printed or copied to another application, such as Word or Excel.

The Open Chart Window includes an Annotation Toolbar, opened using the right-click menu. This allows the user to add annotations, such as text or lines to the chart.

**The modified chart can be saved to disk with the same or a different name.**

The subscriber may be connected using one of the two AGFN servers or through the Client Streaming Server, which is installed on the local network.

**AGFN ExpertLite** is an application designed for less demanding subscribers but still desire accurate and real-time information.



### ***Client Streaming Server (CSS)***

CSS gets data from AGFN network and transfers them, in real-time, to customer's workstations. The connection between the customer local network and AGFN network is performed through Frame Relay or through Internet and automatically creates a Virtual Private Network.

The server is designed in order to provide in various combinations, according to customer needs, continuous data reception. It may provide data, through local network, to more than 500 users in real-time, who may be using AGFN applications or other user-developed applications. In addition, CSS is a tool to provide and update data for databases, Internet Web site, on-line trading systems, and other specific applications.

### **ONLINE ORDERING AND BACK OFFICE SYSTEMS**

AGFN offers a suit of closely integrated products providing a complete integrated solution for stockbrokers operating with Cyprus and Athens Stock Exchange (CSE, ASE) as well as Mote Negro Stock Exchange

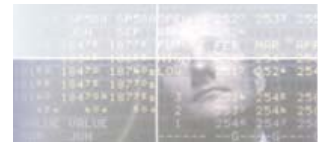
- ✓ Fully integrated Stockbroker system with Oracle or SQL back and windows, web and Winsock based front ends.
- ✓ BackOffice providing all features by CSE and ASE.
- ✓ Order book for tracking Orders and related documentation i.e. signed by customer or through web etc.
- ✓ Portfolio Management providing customer portfolio information including split and rights rules as well as interfaces with SAT or file exchange.
- ✓ ODL Server and Stock Exchange Client for seamless integration with ODL for CSE and ASE.
- ✓ Web based internet Ordering and online portfolio with live prices for customers.
- ✓ Integration with AGFN at the back end for stock prices updating for use with portfolio.
- ✓ Automated SMS, fax email notifications for Orders as per legal requirements as well as optional daily or weekly scheduling for faxing or emailing portfolio statement for customers who request it.
- ✓ Support for margin accounts (EMF,CCF) rights acceptance files for ASE and many other options, reports, export files tools and utilities as required for the smooth running of a stockbroker office.
- ✓ Fully integrated with Netveil Agent Ordering and multicurrency accounting.

### **TECHNICAL ANALYSIS PRODUCTS**

The AGFN Pro may be connected and update technical analysis applications.

#### ***Autowave***

It is an add-on software, which transfers data from AGFN's database, on-line, to technical analysis programs such as TradeStation and MetaStock. In addition, a



simultaneous MsExcel update is available.

## **WEB SITES SOLUTIONS**

### ***Investor Relations***

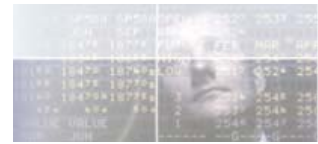
It is a service, which may be used by public companies to offer information through their own web site about their stock.

The information provided by this service is: trading price, trade volume, bid and ask data in depth, orders, graphs, fundamental data and news.



### ***Web Site content***

This service is provided to companies that wish to enrich the content of their web site with exchange data and information.



## **OTHER SOLUTIONS**

### ***Databases***

AGFN maintains and provides databases with following content:

- ✓ News and Press releases of public companies and exchanges.
- ✓ Intra-day and End of Day adjusted prices.
- ✓ Statistical reports, such as analysis by index, by code, derivatives settlement prices etc.
- ✓ Corporate actions history and Fundamental data.
- ✓ Annual financial reports (Profit and loss accounts and Balance sheets)
- ✓ International markets indices closing prices.
- ✓ EURO exchange rates.

All prices data is available in various formats such as TradeStation (xpo), MetaStock, MsExcel, ASCII and other.

The content of each database is available to customers through customised applications.

### ***Custom Made Products***

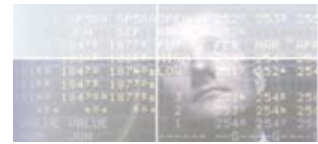
The Company's development group creates financial applications and provides solutions according to customers' specific needs, in accordance with Exchanges rules.

### ***Technical Analysis Seminars***

AGFN offers specialized seminars, which meet investor's specific needs.

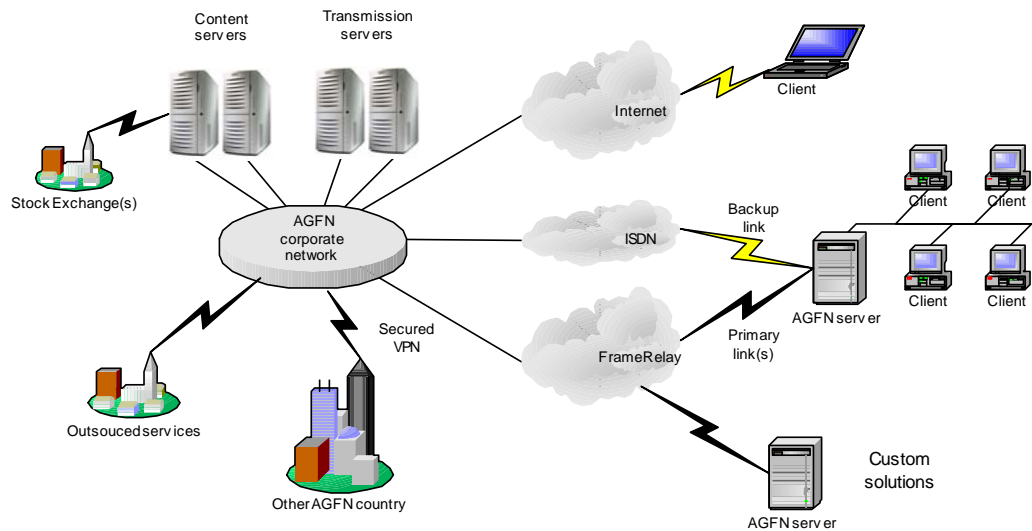
## **SERVICE LEVEL AGREEMENT**

AGFN, confident of its high-level of service, offers the possibility to any customer who wishes so to sign a Service Level Agreement (SLA). The SLA defines terms of the obligations of AGFN towards the customer and the type and level of indemnity in case AGFN fails to meet these terms.



## Infrastructure and Support

AGFN uses the latest network and data technology to collect and process exchange data, maintain, enrich, and transmit information. Information transmission is performed from Greece and Cyprus through Internet and leased lines. AGFN's development group, with special effort, works to minimise telecommunication delays and perfect data transmission.



AGFN applied mechanisms to watch network performance and log events in real-time. Procedures for prompt problem detection and solution have been applied, for effective maintenance, user information, and high-level quality service provision.



### **GREECE**

#### **AGFN Hellas**

Tel: +30 210 864 5154  
e-mail: [marketing@aqfn.gr](mailto:marketing@aqfn.gr)  
Web-site: [www.aqfn.gr](http://www.aqfn.gr)

### **CYPRUS**

#### **AG-Financial Network**

Tel: +357 22 662 232  
e-mail: [aqfn@cytanet.com.cy](mailto:aqfn@cytanet.com.cy)  
Web-site: [www.aqfn.com](http://www.aqfn.com)